



DAMM Multi-Tech Outdoor Base Station BS422

The world's first outdoor base station featuring 4 technologies in one box: TETRA, DMR Tier III, TEDS and Analog. Cover your needs today and tomorrow with a technology independent solution featuring Multi-Technology, Multi-Frequency, Multi-Carrier and Simulcast in one box.



Simply choose the technology to match your current need - and scale anytime to meet changing voice and data needs with a simple click. Or you can even GO HYBRID and combine multiple technologies in one coherent system.

Multi-Technology

- presenting the world's first outdoor base station featuring 4 technologies in one box:

- TETRA
- DMR Tier III
- TEDS
- Analog

Multi-Frequency

- extending coverage by supporting VHF and UHF mode in all technologies

Multi-Carrier

- providing a flexible, cost-efficient solution by enabling up to 4 carriers in one box, and even combining multiple technologies in one box

Simulcast

- available for DMR and Analog, and now also offering repeater functionality for TETRA and TEDS

Go hybrid!

Did you know, it is even possible to use the BS422 in hybrid mode? It allows you to run for example one carrier in TETRA, the second in DMR and the third in TEDS, thereby allowing cross technology communication.

Or simply activate all 4 technologies on one carrier using the new Multi-Carrier feature.

It is also possible to use different technologies at different sites and combine them into one network with one single and central subscriber register.

Critical Communication made easy

DAMM offers the most flexible, scalable and intelligent Critical Radio and Broadband Communication solution available.

We make it easy for you to reduce your TCO, stay agile and move your business forward
- now even across technologies.

Damm Cellular Systems A/S

Møllegade 68
6400 Sønderborg
Denmark
Phone: +45 7442 3500
Fax: +45 7442 3230

www.damm.dk

Applications and Gateways
DAMM applications will run using the same user-friendly interface no matter what technology you choose.



Key Specifications

Innovating critical communication taking our TETRA legacy and know-how to a new level: Unveiling the BS422 Outdoor Base Station

A cross-technology one-box solution offering:

- Compact size, low weight and rugged outdoor base station
- Usable for outdoor as well as indoor installations
- Integrated powerful controller
- Improved redundancy
- Input Power: PoE or external powering
- Output Power: Standard and high power option
- Cross technology (DMR Tier III, TETRA, TEDS and Analog) allowing also hybrid usage
- Easy integration to existing systems, such as enabling upgrade of BS421 or BS418 system with a BS422
- Frequency ranges VHF (68 MHz and 136 - 174 MHz); UHF (400 MHz and 800 MHz)
- Bandwidth (kHz): 6,25; 12,5; 20; 25; 50; 100; 150
- Two way receive diversity for all technology modes
- Synchronization: 1PPS, IEEE1588 via LAN, GNSS (GPS, Galileo, Glonass)
- Multi-Carrier: Allowing up to 4 logical carriers to run on one base station
- Simulcast: Allowing repeater functionality for any technology mode

TETRA mode:

- VHF and UHF support
- High power option
- Market leading power efficiency

DMR Tier III mode:

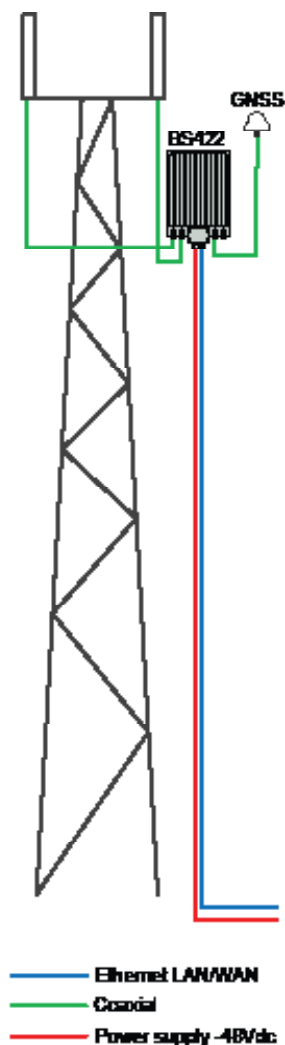
- First DMR Tier III outdoor base station
- Support wide range of DMR terminals
- Full integration into DAMM TetraFlex® Software concept & IP backbone

TEDS mode:

- Most compact TEDS outdoor base station
- Data rate: between 11 to 538kbit/s
- Real critical data communication
- Similar spectral efficient as LTE, but far less frequency scarcity

Analog mode:

- Easy migration from Analog to TETRA or even TEDS
- Full integration into DAMM TetraFlex® Software concept & IP backbone
- Supporting conventional FM radio



**DAMM Multi-Tech Platform
featuring the BS422
Outdoor Base Station**